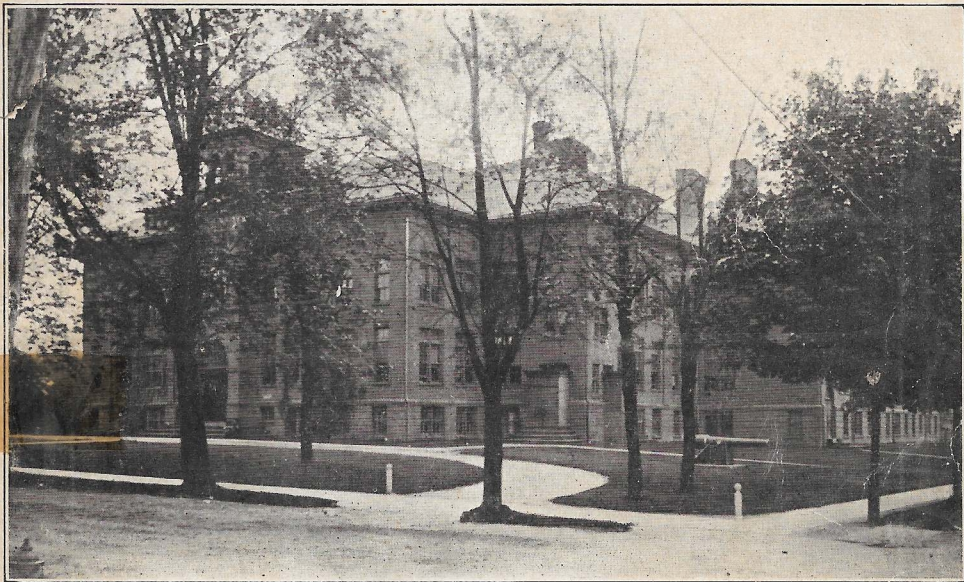


Mrs. Jennie Reilmeyer  
41 Wallace St. Freeport, N.Y.

# BAYVIEW FREEPORT, L.I.



FREEPORT HIGH SCHOOL

Highly Restricted & Residential Development

## Onslow-Moore Company

OWNERS

"TEMPLE BAR," 44 COURT STREET  
BROOKLYN, N. Y.







# Location makes Valuation

EVERY man or woman who is interested in the purchase of real estate, naturally wants that which will increase in value reasonably fast, and in order to obtain that result it is quite necessary to locate in a section where the environments are first class and guarded against the entrance of any possible nuisance, by being properly restricted.

BAYVIEW, FREEPORT, L. I.

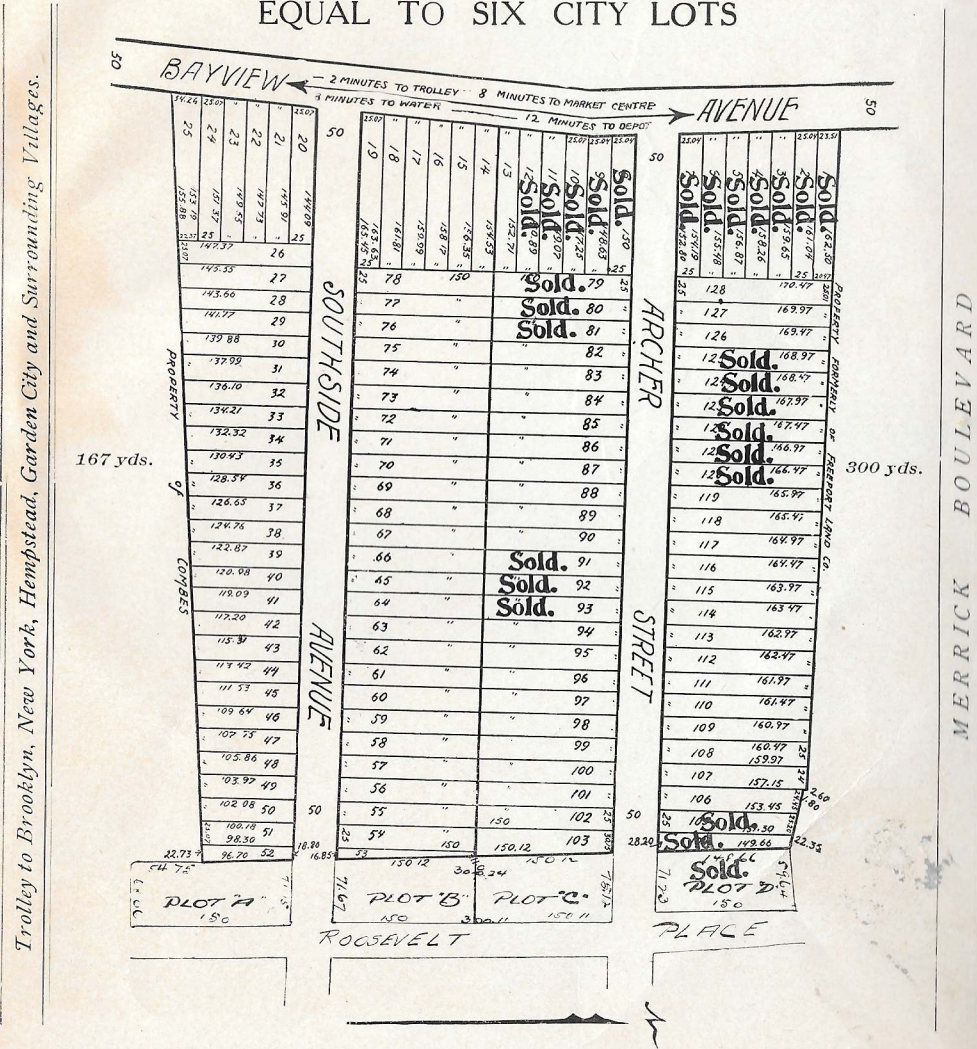
IS SO PROTECTED



FREEPORT DEPOT

# Bayview—First Section

VILLA (75 x 160 About) PLOTS  
EQUAL TO SIX CITY LOTS





## A Few Comparisons with Freeport in the Lead

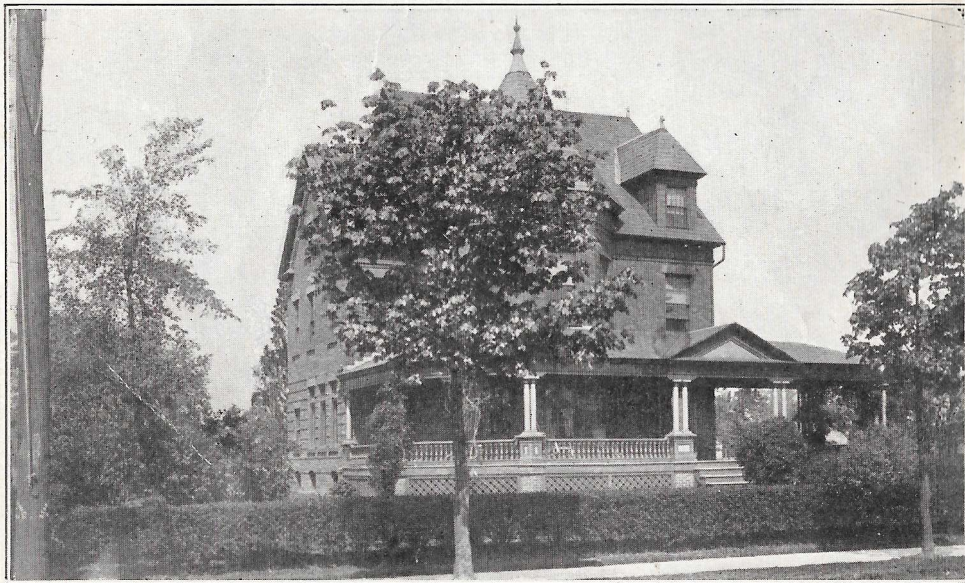
THE officials of the Long Island Railroad for the past two years have kept a complete record of all the buildings completed each year within the villages, on the lines of its railroad, the total being in 1905, 4,257, of which 3,964 were dwellings, and in 1906, 5,311, of which 4,836 were dwellings, the greatest activity being in the following villages:

	1906	1905	TOTAL
FREEPORT	252	303	555
Jamaica	300	103	403
Rockville Centre	154	81	235
Bayside	123	80	203
Lynbrook	111	73	184
Valley Stream	75	28	103

FREEPORT, the ideal suburban village of Greater New York.

PRICES of BAYVIEW LOTS are LOW and TERMS LIBERAL.

SEND FOR PROSPECTUS AND MAP.



O. W. HUMPHREY'S RESIDENCE, cor. Ocean Ave. and Archer St.  
400 Yards to Our Property.

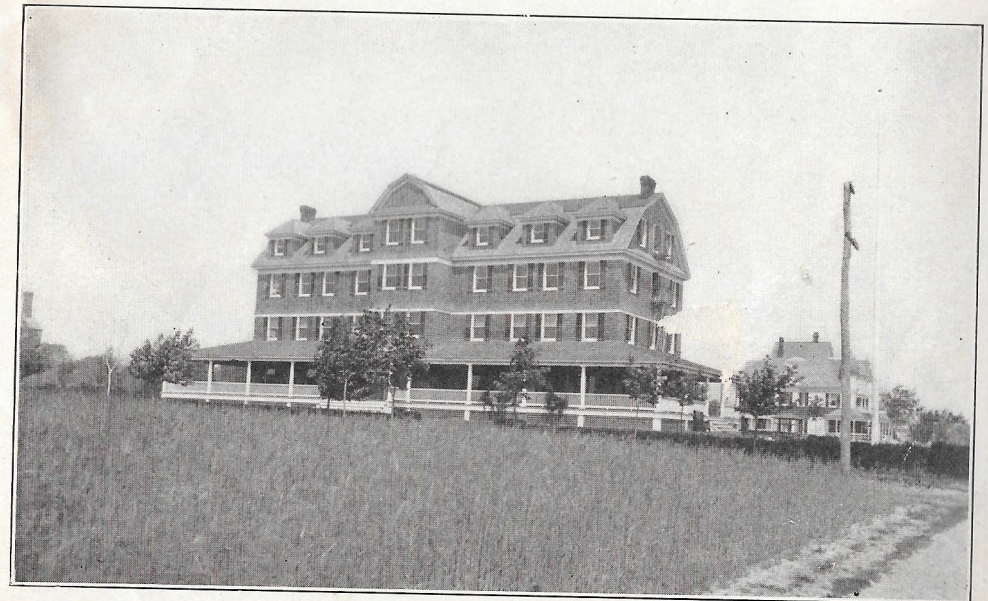
Mr. Humphrey is one of Freeport's Progressive Builders. Is now erecting Cottages at Bayview

## Ten Facts Pertaining to Bayview

THE NATURAL EXTENSION OF THE  
FASHIONABLE SECTION OF FREEPORT, LONG ISLAND

- First: The property is highly restricted.
- Second: The property has cement sidewalks.
- Third: The property has electric lights.
- Fourth: The property has water.
- Fifth: The property has shade trees.
- Sixth: The property has perfect drainage.
- Seventh: The property has twelve houses now in course of construction.
- Eighth: The property has thirty-four trains daily.
- Ninth: The property has trolley from Brooklyn passing within two blocks.
- Tenth: The property is within the incorporated village of Freeport, with all the advantages of stores, banks, hotels, clubs, secret societies, churches of all denominations, free public library, fire department, and Board of Trade.

SEE OUR REPRESENTATIVE OR SEND FOR PROSPECTUS.



CRYSTAL LAKE HOTEL, about 500 Yards from Bayview.



# Freeport, N. Y.

Is a thriving, progressive incorporated village, situated on the south shore of Long Island, overlooking the Great South Bay, twenty-two and eighty-three one hundredths miles from New York. The village has its own water and electric light plant. Its permanent inhabitants exceed 6,000, and is largely increased by summer residents, many occupying furnished cottages. The School facilities equal the best, having good modern buildings (a new building now under construction), grammar and Academic departments; in faculty, there are 25 teachers including Superintendent and principal, and an enrollment of over one thousand pupils. The village has up-to-date improvements, including gas, electric light, water, fine roads and beautiful shade trees. It is the first town on Long Island convenient to the water. A trolley line running through the southerly and easterly portion of the village is within five minutes walk of almost any part of the village.

MONTHLY COMMUTATION TO NEW YORK . . . \$8.50  
Trolley to New York, or any part of Brooklyn . . . 25 cents



MERRICK BOULEVARD, about 300 Yards from Bayview



FREEPORT BANK



ONE OF THE BUSINESS SECTIONS OF FREEPORT, L. I.





**C**ROPS were growing here last summer (1906). An old saw says: "Never show unfinished work to fools and children"; but as you, dear reader, do not belong to either class, you will appreciate that these dwellings will look very different when completed.

**C** They will range in value from \$5,000 to \$10,000, and the builders will sell them on attractive terms to homeseekers. Six more are being started as we go to press. All are being built by local builders with their own capital to supply the demand, and not to boom our section.



---

## About 800 Pds. from Bayview

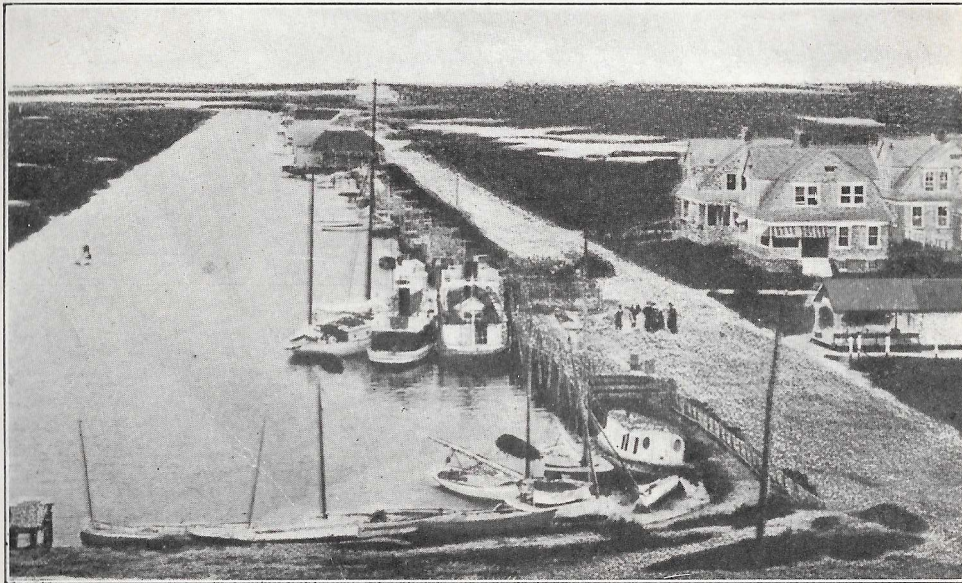
---

**U**OU can take a ferryboat to Long Beach (the new Atlantic City), where the pleasures of surf and still water bathing await you.

☛ The Freeport Club, Prospect Gun Club and Hempstead Yacht Club are well known, and add much to the summer gaiety.

=====

TITLE GUARANTEED by TITLE  
COMPANIES



WATERWAY TO BAY

---

## Bayview vs. The Bronx

---

**U**OU remember how lots in the Bronx were selling for eight hundred (\$800) to twenty-five hundred (\$2,500) dollars only a little while before the transit facilities were improved. To-day those same lots are held at from three to ten thousand dollars, an increase of three to four hundred per cent., and in point of time BAYVIEW is just as near the City Hall as is THE BRONX.

- ☛ Don't you see that you are losing a great opportunity?
- ☛ Secure a home site now that would cost two, three or four times as much a little later.
- ☛ BAYVIEW is positively the best place on Long Island to buy a site for a home or for speculation.

WRITE FOR PARTICULARS, GO AND VIEW THE PROPERTY.



IMPERIAL HOTEL. About 300 Yards from Our Property





FINEST SECTION OF FREEPORT  
VIEW LOOKING SOUTH FROM OCEAN AVE. AND ARCHER ST.  
About 400 Yards from Our Property



SPECIMEN OF FREEPORT'S FINE ARCHITECTURE  
About 500 Yards East of Bayview



WOODCLEFT INN, at Head of Freeport's Waterway

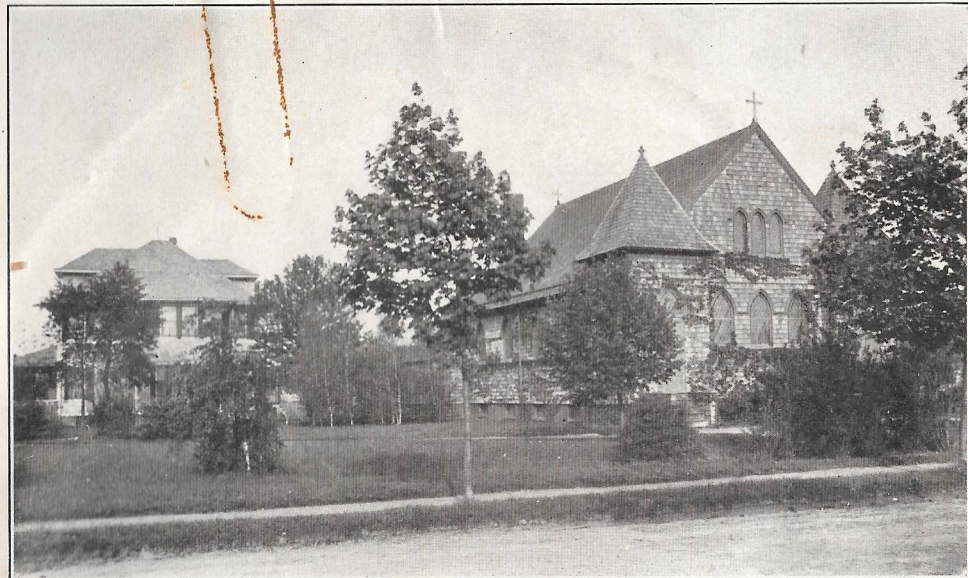


DEAN RESIDENCE, Corner Ocean Ave. and Archer St.  
Opposite Our Property, 300 Yards  
Also Built by O. W. Humphrey

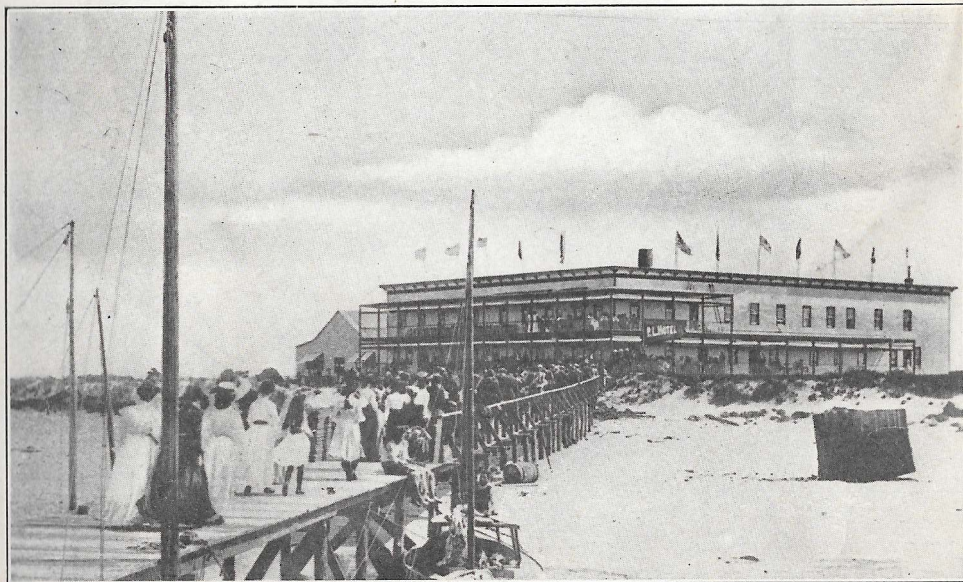




FREEPORT CLUB HOUSE



ONE OF THE MANY CHURCHES



LANDING AT POINT LOOKOUT OPPOSITE FREEPORT ON LONG BEACH

**F**REEPORT is delightfully situated for a charming suburban life. Here the prettiest villages join one to the other so that lonely spots are hard to find. The roads are full of happy people riding, driving and walking. On the West are Baldwin's, Rockville Centre and Lynbrook; on the East are beautiful Merrick; on the South the Bay, Long Beach and the Ocean; on the North, Hempstead and Garden City, with its famous boys' and girls' schools and Cathedral. The Garden City Hotel, the celebrated golf links and the Meadowbrook Hunt Club are some of the numerous other attractions nearby, while it is but a moderate ride to the Sound and its many fine places.



---

## Some of the Improvements under way in Freeport, L. I.

---

**N**EW POST OFFICE BUILDING to be fully equipped for the free delivery service for which contract has been given out.

✧ ✧

☞ The South Bay Yacht Club, of which Charles Southard is Commodore and William P. Miller, Vice-Commodore, are about to erect on the banks of the new waterway at the foot of

### BAYVIEW AVENUE

a large handsome new building, 100x150 in size, fully equipped to meet the wants and demands of its members.

✧ ✧

☞ A New York caterer will have charge of the dining room and supply the market's best.

✧ ✧

☞ There will also be attached a fine automobile garage, which will be in charge of a competent man, where the automobilists may find relief for their machines, and themselves comfort at the South Bay Yacht Club.

✧ ✧

☞ The great enterprise of dredging the new waterway from the Bay almost to Bayview, 450 feet in width, is almost completed.

✧ ✧

☞ The property is also bounded on the West by Milburn Creek, which is navigable for small craft.